



GAT MONTHLY MEMBERSHIP PROGRESS REPORT

Results as of: 5/31/2023

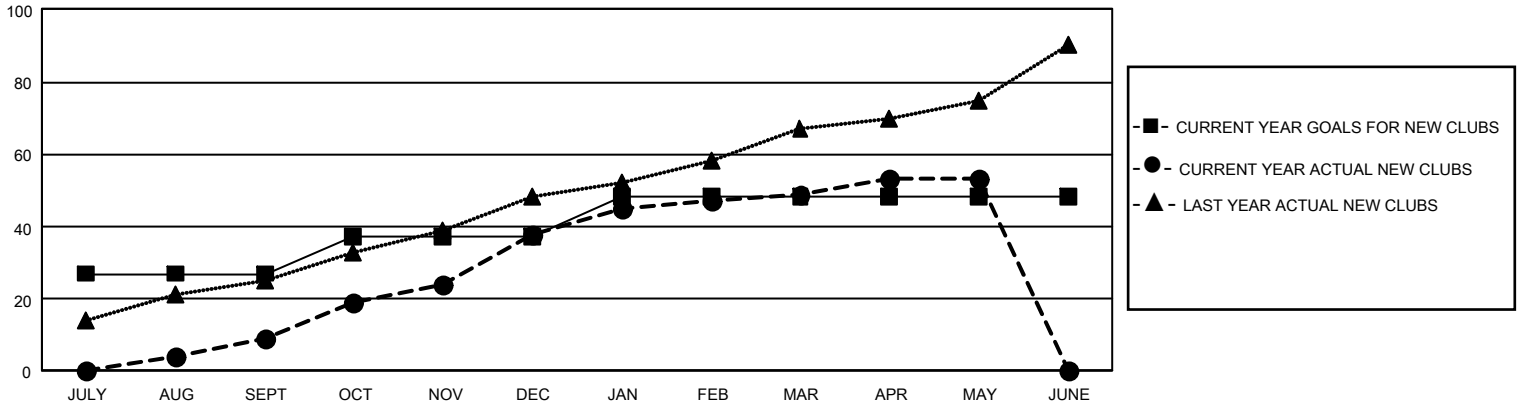
GMT Constitutional Area 6, Group B

REPORT DOES NOT INCLUDE CLUBS IN UNDISTRICTED AREAS.

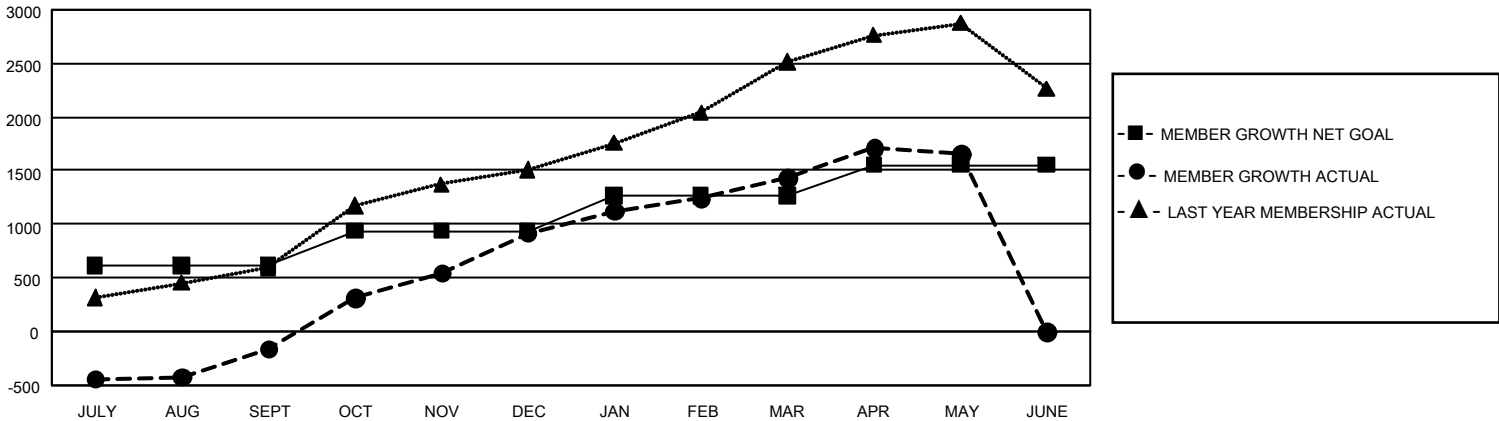
Clubs			
RESULTS FOR 2022-2023			
QUARTER	NEW CLUB GOAL	NEW CLUBS	DROPPED CLUBS
JULY/AUG/SEPT	81	9	28
OCT/NOV/DEC	30	29	3
JAN/FEB/MAR	33	11	0
APR/MAY/JUNE	0	4	0

Members			
RESULTS FOR 2022-2023			
QUARTER	MEMBER GROWTH NET GOAL	MEMBER GROWTH ACTUAL	DROPPED MEMBERS ACTUAL (including transfers)
JULY/AUG/SEPT	610	947	1,019
OCT/NOV/DEC	329	2,156	963
JAN/FEB/MAR	324	787	195
APR/MAY/JUNE	290	519	250

GOALS AND ACTUAL NEW CLUBS CUMULATIVE



GOALS AND ACTUAL MEMBERS CUMULATIVE



DROPPED CLUBS: 31	526 CLUBS OF 695 ADDED 1 OR MORE NEW MEMBERS	<u>GENDER DISTRIBUTION</u>	
<u>DROPPED MEMBERS</u>		MALE	13,964 (73.93%)
DECEASED	55	FEMALE	4,922 (26.06%)
CLUB CANCELLED	462	NON BINARY	0 (0.00%)
OTHER	1,914	PREFER NOT TO ANSWER	1 (0.01%)
TOTAL	2,431	TOTAL FAMILY UNIT MEMBERS	7,677
	CLICK HERE FOR CUMULATIVE MEMBERSHIP DATA	FAMILY MEMBERS PAYING HALF DUES	4,478